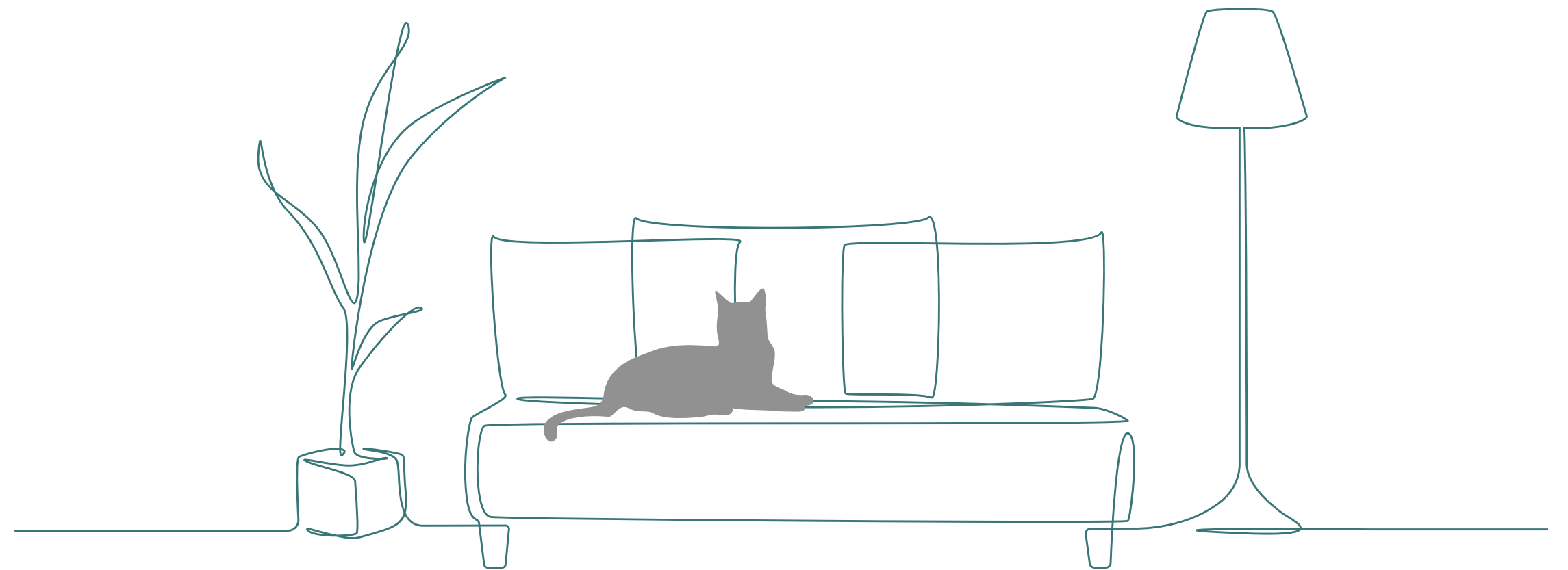




Welcoming

Your Newly Adopted Cat or Kitten

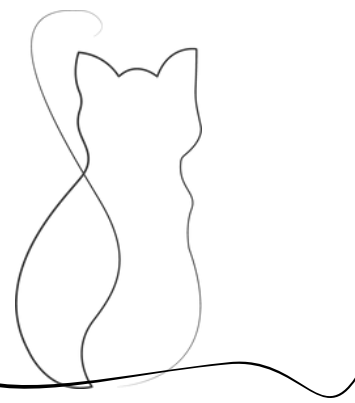


Advice, Suggestions & Recommendations
for a More Smooth Transition

Welcome Home!

Welcoming a new cat or kitten into your home is an exciting experience! To ensure your new furry friend settles in happily, a bit of preparation can go a long way.

Whether this is your first cat or you're already accustomed to feline companions, and even if you currently have another cat at home, this guide provides valuable tips that can help make your newly adopted friend's transition a more seamless process.



It's most important to keep in mind, these inherently territorial animals will often experience some level of stress while adjusting to their new surroundings. Your patience is vital to their successful adjustment!

CONTENTS

Section 1

Let's Get Set Up!

3. NEW CAT "BASE CAMP"
4. ESTABLISHING A BASE CAMP
5. BASE CAMP SUPPLIES & ADVICE
6. RECCOMENDATIONS

Section 2

Settling In

7. GETTING COMFORTABLE
8. GAINING TRUST & SHY KITTIES
9. MORE ROOM TO ROAM

Section 3

Resident Cat Introductions

10. SCENT SWAPPING
11. GRADUAL EXPOSURE
12. POSITIVE ASSOCIATIONS & CAT REINTRODUCTIONS



New Cat "Base Camp"

Prepare Ahead - Establish a "Base Camp" for your Newest Feline Friend



Preparing ahead for any new endeavor often helps reduce the anxiety associated with change. This is especially relevant when bringing home your newly adopted cat. You, your family, and any existing pets will feel more at ease once you've dedicated some time to establishing a plan prior to the arrival of your newest furry companion.

What is a "Base Camp"?

For many, the phrase "Base Camp" conjures images of a secure haven for climbers tackling a towering mountain or a safe retreat where military personnel regroup after navigating challenging environments. Your new cat's base camp essentially serves a similar purpose.

Experienced cat rescue groups as well as veterinary experts agree, your new cat's "Base Camp" is a critical component to ensuring they're given the safest and most comfortable opportunity to slowly become familiar with and can relax in their new environment.

This "Base Camp" will also serve as a major step towards establishing a positive introduction to your resident pets if you have them.



Your Cat's Natural Instincts

In contrast to dogs, cats are not as domesticated and share more traits with their wild ancestors, which makes them more cautious in unfamiliar environments.

When faced with a large, open area, cats instinctively want to hide and may feel anxious, as they perceive potential threats from predators in new surroundings filled with unfamiliar sounds and scents.

Therefore, minimizing the space they are introduced to when they first arrive in a new home significantly helps reduce their stress levels.

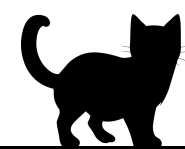
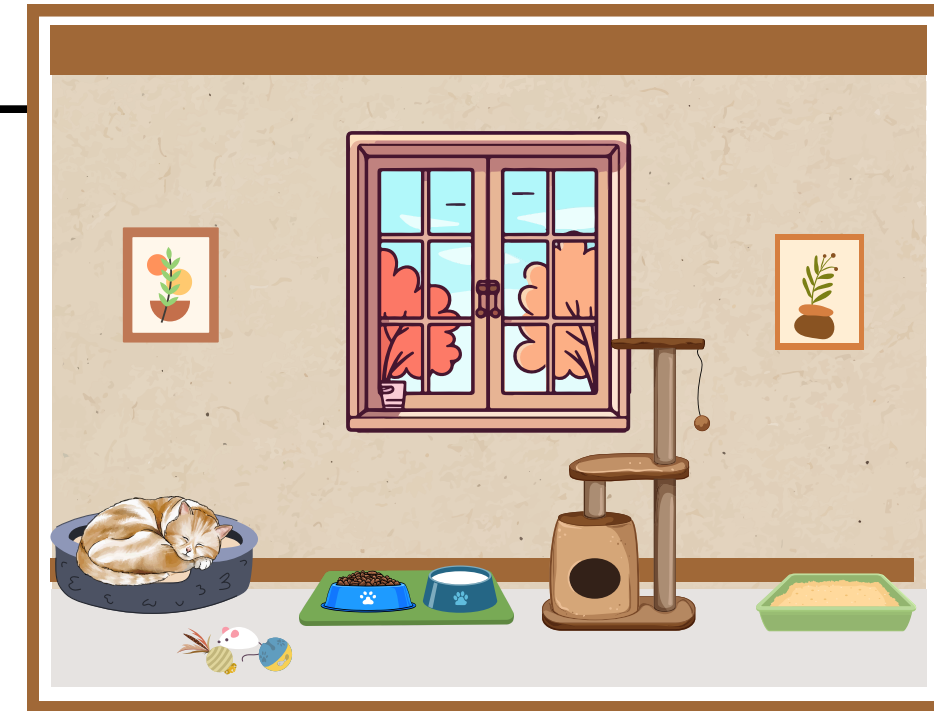
Establishing Your Cat's Base Camp →

Establishing Your New Cat's "Base Camp"

The ideal spot for your new cat's "base camp" is an unused or spare bedroom that benefits from natural light, ideally from a window. This designated area should be free from potential hazards for your feline companion. For example, avoid having houseplants in the cat's base camp, and ensure all blind cords are secured to prevent entanglement. Additionally, remove any fragile or breakable items, as well as phone cords that cats might chew on or through, also, ensure all windows and screens are securely closed and locked for your cat's safety.

Alternative Base Camp Spaces

If an additional bedroom isn't an option in your home, a seldom-used bathroom can serve as a suitable "base camp" for your new cat. When utilizing a bathroom for this purpose, ensure that the space is safe for your new feline friend and that there is enough room for all the essential supplies your cat will require. Use child safety locks to secure all cabinets, and keep medications out of the room or stored in a place that your cat cannot access.



Kitten Base Camp Enclosures



For creating kitten base camp spaces, extra-large metal dog or multi level kitten crates are an excellent choice. Additionally, heavy-duty mesh kitten "playpens" can be utilized. For very small kittens, these options provide the safest, easiest, and most lightweight solutions for a convenient base camp.

Kitten Base Camp Option Links

METAL DOG OR MULTI LEVEL CAT CRATE LINKS:

[42" LARGE METAL DOG CRATE FROM AMAZON](#)

[MULTI-LEVEL METAL CAT CRATE FROM AMAZON](#)

KITTEN PLAYPEN LINKS

[44" x 44" KITTEN PLAYPEN FROM AMAZON](#)

[31" + 20" KITTEN PLAYPEN FROM AMAZON](#)

ON THE FOLLOWING PAGE, MAKE SURE TO REVIEW OUR TIPS AND ADVICE ON HOW TO AVOID SPACES WHERE YOUR NEW CAT MIGHT BE ABLE TO HIDE FOR EXTENDED PERIODS OF TIME.

Base Camp Supplies & Advice



Necessary Supplies for Your New Cat's Base Camp

➤ **Food & Water Bowls**

See Food Recommendations

➤ **Litter Box & Litter Scoop**

➤ **A Scratching Post**

Or A Cardboard Scratching Mat

➤ **A Comfortable Cat Bed**

➤ **Some Small Cat Toys**

Wands, Felt Mice and Crinkle Balls Are Always Favorites

➤ **A Cat Carrier**

Food Recommendations

Cats are obligate carnivores, which means their diet must include meat. Ideally, a cat's diet should consist of 50–60% protein and 30–50% fat. It's essential for cats to obtain vitamins like taurine and arginine, along with minerals such as calcium, phosphorus, potassium, sodium, chloride, magnesium, iron, copper, manganese, zinc, and iodine. Omega-6 and omega-3 fatty acids are beneficial for reducing inflammation, while carbohydrates offer energy and support intestinal health.

When Possible Choose Quality Brand Foods Like:



Avoid Excessive Hiding

It is **crucial** not to let a newly adopted cat hide under large pieces of furniture for extended periods of time. Prolonged hiding may signal considerable stress or fear regarding their new surroundings, which can impede their adjustment and bonding process with you. While some desire to hide is normal, natural, and anticipated, offering a “safe hide-out” is the best way to prevent hiding from becoming a habitual behavior for your new feline companion.

Whenever you can, restrict your cat's access to areas under large furniture or hard-to-reach spots in their “base camp.”

Additional Helpful Items

A Cat Tree

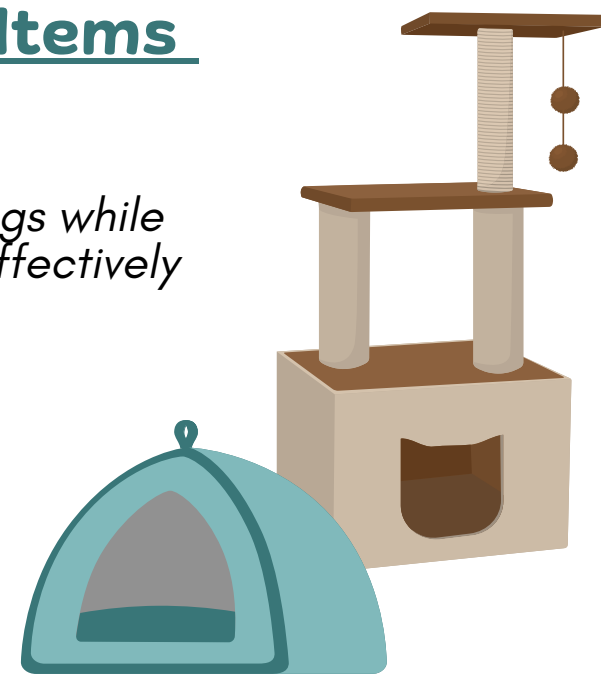
Cats prefer elevated spaces to observe their surroundings while staying hidden from potential “predators”. A Cat Tree effectively fulfills this natural instinct.

Their Own Safe “Hide-Out”

Cats and kittens need a “safe space” to retreat to when they feel threatened or anxious. This designated area should be off-limits to humans. When they seek refuge in this special hiding spot, they should feel reassured that they will be undisturbed.

Feliway Products

Feliway is a product that comforts cats and kittens by mimicking natural pheromones from mother cats to reduce stress. It is available as a spray or a plug-in diffuser.



FELIWAY LINK

You can easily block off spaces beneath big items like beds or dressers by cutting cardboard to the appropriate size and securing it with painter's tape. This approach provides a temporary solution to limit your cat's access without causing any lasting damage to your furniture.

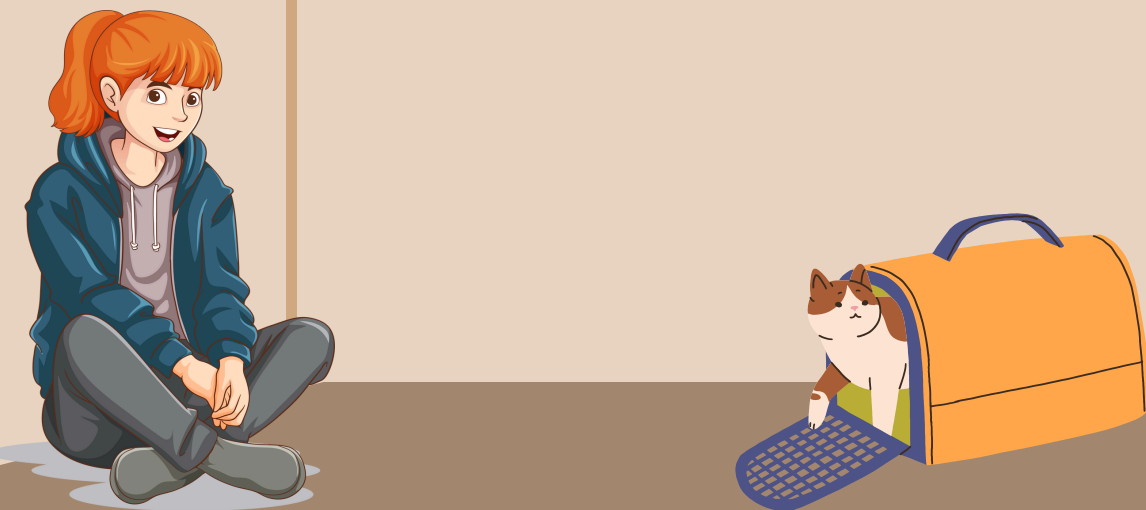
As your newly adopted cat adjusts to their new home and family, it's important to let them retreat to their "safe hide-out" whenever they feel the need. Avoid reaching into their hide-out, as this space should be a sanctuary where they can feel secure and unthreatened. To help your cat become accustomed to you and your family, spend time sitting across the room individually, speaking softly and calmly to them. Reading aloud to your new feline friend is an excellent way for both adults and children to build trust and help the cat feel more comfortable in their new environment.

Bringing Your New Cat Home

Now that you've completed the adoption process and prepared your new cat's base camp, it's time to warmly welcome your newest feline companion into your home and family! We've compiled some helpful suggestions to minimize potential stress for both you and your cat as they are introduced to their new surroundings.

Without a doubt, everyone in your household will be thrilled to welcome their new feline friend - and that's perfectly natural. However, it's important to remind everyone that the sudden influx of new faces, loud voices, and unfamiliar scents in a completely new setting may be overwhelming for your new cat.

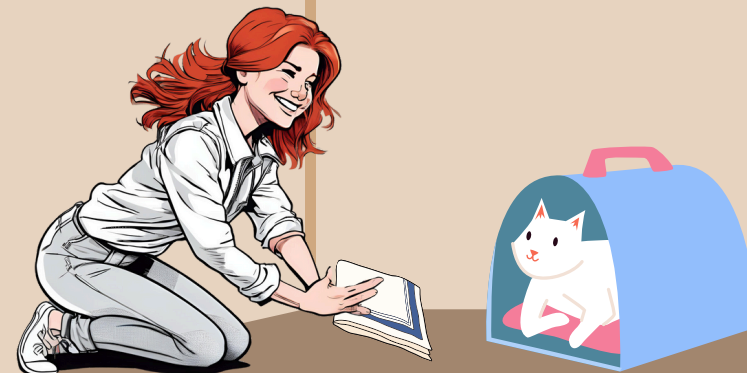
Place your cat in their Base Camp by setting the carrier on the floor. Open the carrier door and let your cat come out at their own pace when they're ready to explore.



Regardless of whether your new cat is hesitant to emerge from the carrier or not, sit on the floor at a comfortable distance and speak to them gently in a calm, soothing tone.

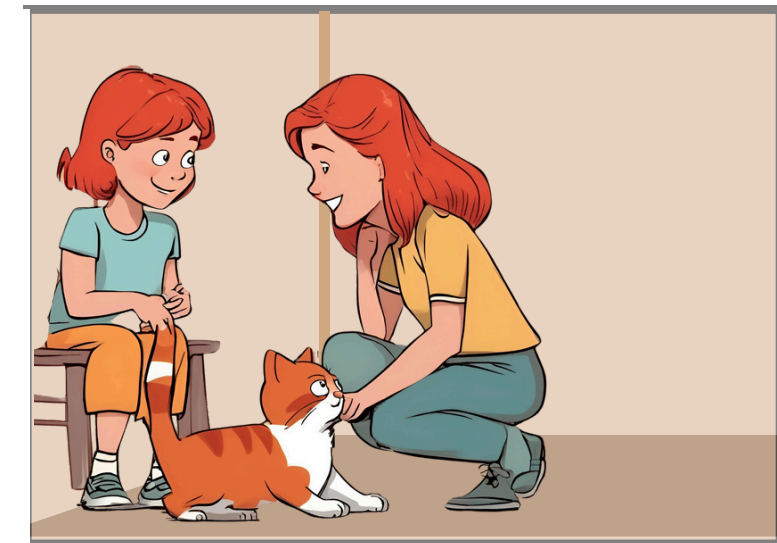
Let them exit the carrier at their own pace; avoid pulling them out or forcing them to explore their surroundings before they feel ready.

If your new cat hasn't felt comfortable enough to leave their carrier after 10 to 15 minutes, gently approach the carrier and present them with something that carries your scent. This could be a piece of clothing or a cloth that has been in the room they are about to enter.



Place the item inside the carrier for your cat to sniff, then return to your previous seat. Keep speaking to your new feline friend as they acclimate to your scent.

After your new cat has emerged from the carrier and taken some time to get acquainted with you and their new surroundings, allow them some quiet time to explore their space independently for at least an hour before you interact with them again on their first day.

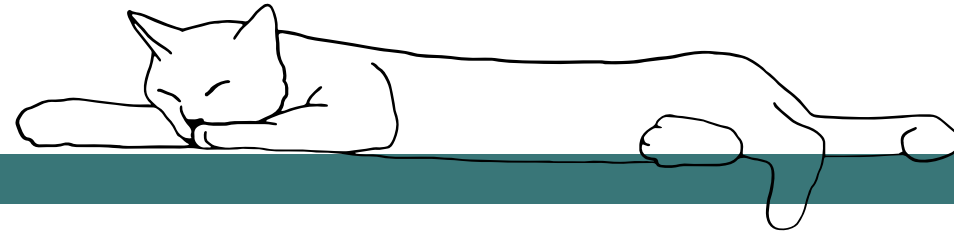


You can also give your cat treats when welcoming new family members, helping the cat to associate them with positive things!

Encourage every family member to have short, peaceful visits with your cat in their designated base camp space over the next few days. This allows each person to bond with the cat individually as they become acquainted with one another. It's essential that the individual who first introduced the cat to this area always accompanies children during their visits.

Acclimating

Home Sweet Home 



Patience is the key to helping your newly adopted cat acclimate successfully. If you find that your new feline is taking time to adjust, remember the "3-3-3 Rule." Experts in cat rescue and behavior generally agree that it takes about 3 days for a cat to decompress, 3 weeks to understand your routine, and 3 months to truly feel at home. The upcoming pages offer useful tips and suggestions to make the settling-in process smoother and less stressful for both you and your new furry companion.

Getting Comfortable

Allow your new cat ample time to adjust to the routines of their new home and the people living there.

Make sure to spend quality time alone with your new cat, as this helps build a trusting bond between you.

While your new cat is confined to their "base camp," make sure to visit them frequently. Evening check-ins are an excellent opportunity to establish daily play sessions; this will help your cat become more at ease and strengthen the bond between you.



If your cat appears uncertain during your regular visits in the base camp area, it's important to revisit the fundamentals: sit on the floor and allow them to approach you at their own pace. Speak softly from across the room to avoid coming off as threatening, and remember not to pressure your cat into interaction when they seem anxious; they will approach you when they feel secure and are ready.

Gaining Trust

Maintaining a respectful distance while still expressing your desire to get to know your cat can help them understand that you pose no threat and won't intrude on their territory. This essential strategy reassures your cat that they have a safe haven to retreat to if they feel the need to escape. Applying this technique, even with a somewhat hesitant cat, can significantly shorten the time required to gain their trust. Additionally, it empowers them to feel more confident about emerging from their hiding spots.



The most effective way to earn the trust of your new feline family member is to honor their space and be patient as they acclimate to their new surroundings.

If your cat is hiding for extended periods, it may signal distress related to a more permanent issue in their environment. While this could stem from various factors, it is frequently due to the presence of other cats in the home or an overly enthusiastic person interacting with them.




Give your new cat the space to acclimate at their own pace. If they seem reluctant to approach, it's best to leave them be and attempt interaction later. Some cats may feel more anxious than others initially, and they might choose to retreat to their "hidey hole," staying hidden when you're nearby at first.

Hesitant or Shy Kitties

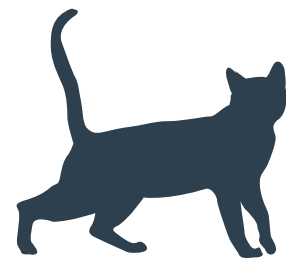
One of the key concepts is to view the world through a cat's perspective. By doing so, you'll enhance your ability to understand their needs, effectively troubleshoot minor issues that may arise, and strengthen your connection with them. This understanding will cultivate a trusting and affectionate relationship.

Introducing a fearful or timid cat to a larger environment too quickly is one of the most frequent mistakes made during their acclimation to a new home. This decision can significantly impact your ongoing journey with the pet. It's crucial to emphasize this point, as hiding is a leading reason many cats find their way back to rescues and shelters. If you notice that you have rushed this process, return your cat to a smaller space and allow them to stay there for an extended period. This duration may vary from days to weeks or even months, depending on the individual cat's needs.

Don't rush the first acclimation steps, it will be worthwhile to take it even slower than you think you should. Giving them plenty of time to adjust and feel safe in a smaller space will lay a good foundation for them. A slow, gradual approach helps develop a deeply trusting, loving bond.

-  **A PHEROMONE DIFFUSER:** LIKE THE FELIWAY® CLASSIC DIFFUSER, CAN HELP CALM YOUR CAT. IT PLUGS INTO AN OUTLET AND RELEASES A SYNTHETIC PHEROMONE THAT CATS NATURALLY PRODUCE FROM THEIR CHEEK SCENT GLANDS.
-  **BABY FOOD:** MOST CATS LOVE BABY FOOD (MADE FOR HUMAN BABIES) AND IT CAN BE A REALLY GOOD WAY TO GET THE CAT TO COME TO YOU. REMEMBER TO ONLY USE ALL-MEAT BABY FOOD, EITHER TURKEY OR CHICKEN.
-  **TOYS:** PLAYING WITH TOYS IS A GREAT WAY TO BOND WITH YOUR CAT WITHOUT DIRECT CONTACT, ALLOWING FOR CLOSE INTERACTION IN A NON-THREATENING MANNER.

More Room To Roam



As mentioned previously, cats are naturally territorial creatures; entering a vast new space can trigger feelings of anxiety in them. With so much unfamiliar territory, it's hard to predict what surprises might lurk around each corner!

If you have existing pets in your home, please review the Pet Introduction Information on the following pages before allowing your new cat to explore other areas of your house.

After a Few Days in their "Base Camp" – Slowly Explore New Areas Together

- To reduce the fear your new cat may feel in larger, more open spaces, introduce them to small areas of your home slowly. After each new adventure, return your cat to their "Base Camp" where they have become most comfortable already.
- Your cat may feel anxious in an unfamiliar environment. Their natural instinct will be to flee, which means that even a slightly open window or door could prompt them to make a run for it. It's essential to ensure that all windows and doors are kept securely shut, unless you are absolutely certain that your cat is safe in their room and cannot find a way to escape.
- Everyone in the household needs to be aware that specific rules will be implemented during the initial days and weeks. It is essential for all household members to know the whereabouts of your new cat.



Kittens

To minimize the risk of injury, small kittens should be confined to their "Base Camp" overnight and when unsupervised, until they grow large enough to explore the house alone safely.

We're Here To Help!

Please don't hesitate to reach out if you need any assistance at all while acclimating your new cat.

RESIDENT CAT INTRODUCTIONS

Now that your new cat has had ample time to acclimate to their surroundings, it's time to start the gradual introduction to your family's resident pets. As territorial beings, cats require a slow introduction process and need time to adjust to one another.

Your ongoing patience is essential for ensuring a successful introduction process.

1 Scent Swapping Cats communicate by using pheromones and scents.

YOU'LL WANT TO BEGIN BY GRADUALLY INTRODUCING THE SCENT OF EACH CAT TO THE OTHER.

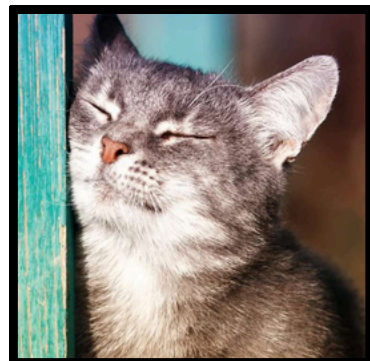
THIS SHOULD BE DONE WITHOUT ALLOWING FOR PHYSICAL CONTACT.

The goal of scent swapping is for both cats to become fully comfortable with the new smells of one another **before interacting physically.**

Below is a popular method of collecting "scents" that has proven to be successful.

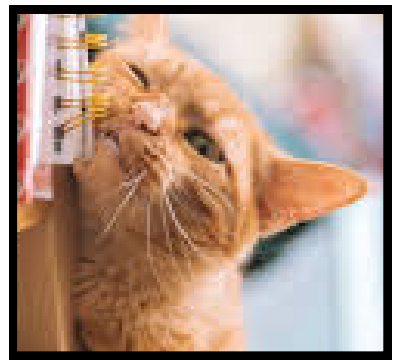
COLLECTING SCENTS

- Gently rub each cat with a separate blanket, towel, or piece of fabric – Clean socks also work well for this!
- Using fabrics with different patterns or colors can help you to easily remember which piece belongs to each cat.
- Place your new cat's "scented" cloth under or near your resident cat's food bowl and vice versa.



Cats recognize whether they are in the same "group" by using scent. Your goal is for the cats to recognize one another as part of the same group by creating a communal scent.

There is a greater chance your cats will accept the physical presence of each other as they are more likely to consider themselves part of the same group.

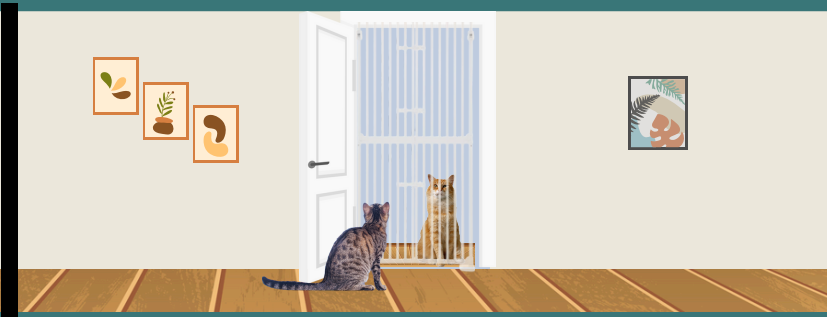


CATS Meeting CATS

There are numerous benefits to having a household with multiple cats. Bringing a new cat into a home that already has a resident feline is an exciting experience, but it requires careful management to ensure the well-being of both cats. The essential approach is to introduce your new cat gradually and methodically, applying the principles of desensitization and positive reinforcement.

RESIDENT CAT INTRODUCTIONS

2 GRADUAL EXPOSURE



After giving each cat some time to become familiar with their swapped scents, gradually expose each cat to the other's "territory" (**while they are not present**).

✦ This step will further assist in the process of combining scents.

Allow each cat the opportunity to explore the other's "territory". During each kitty's exposure to the other's space, contain your resident cat or your new cat behind a closed door - avoid any physical contact.

When each cat has had a chance to investigate the other's area, return your new cat to their "Base Camp" and allow your resident cat free roam once again.

✦ Allow this exposure at least two times before moving ahead.

If either cat shows signs of stress after this step in the introduction process, continue to provide each cat with this opportunity for gradual exposure until you are comfortable moving forward.

- After at least 2 days, open the door just a crack so the cats can see each other but cannot stick their heads out.

Be prepared for some hissing and growling. If one tries to smack the other, close the door.

Continue this fairly often, perhaps once or twice a day.

- Allow them to interact, but keep a close eye on their behavior.

It's important to understand that jealousy is a natural response. Avoid yelling, scolding, or punishing your resident cat for hissing at the new arrival. When your cat exhibits friendly or at least non-threatening behavior towards the newcomer, be sure to praise and reward him with treats.

If any fighting occurs or if either cat shows significant stress, separate them for a few more days. You may need to revisit earlier steps before permitting direct interaction again.

- Hissing at a new arrival is a fairly common behavior, but be alert for these warning signs that may lead to an actual confrontation:

- Piloerection (i.e. fur appears puffed or fluffed up), Flattened ears, Batting of paws, Spitting, or Yowling

Get A Gate

If you observe noticeable tension between your cats, it's wise to take a moment to reassess. Consider installing a baby gate at the entrance of your new cat's "Base Camp," and then follow these helpful steps:

✦ Food is usually the easiest and most powerful tool for creating good feelings. Choose some extra special food or treats that the cats love for just this exercise.

Install a baby gate in the entrance of the designated safe area. Drape a towel over the gate to prevent the cats from seeing each other, and then proceed to open the door.

✦ The ideal gate for this exercise is one that securely fits your entire doorway. Search for "Pet Gates" to find options like this.

Remove the sheet for a moment or two until the cats see each other and toss each one a treat, then replace the sheet.

✦ Don't encourage or lure the cats closer; just toss the treats to where they are comfortable. This may be easier to do if there is a 2nd person, but can be done alone.





Repeat this activity 3-5 times in a row, a couple times a day. If both cats are calm and eating the treats, you can leave the sheet off and gradually increase the amount of time that they see each other between treats. Build up to 5-10 minutes of calm with a few treats mixed in.

RESIDENT CAT INTRODUCTIONS

3 POSITIVE ASSOCIATIONS



Some cats are naturally more adaptable than others, and a few may never fully accept their furry companions. However, as long as their interactions remain free from genuine conflict, your cats will typically discover ways to live together harmoniously.

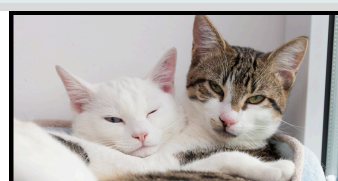
-  Utilize toys and treats to alleviate anxiety, engage their minds, and create positive associations when they meet one another.
-  Creating enjoyable experiences, such as offering treats to cats in close proximity, helps them link each other's presence with positive moments like playtime or snacks.
-  Remember to be patient and keep an eye on their body language for any signs of stress or aggression.
-  Utilize toys and treats to alleviate anxiety, engage their minds, and create positive associations when they meet one another.

Becoming Friends & Sharing A Family

Introducing cats to each other can be a gradual process, but it's certainly achievable. Coexisting in semi-harmony – which is often the best outcome with feline friends – can be realized if you follow the right steps.

The time it takes for two cats to acclimate to one another can differ significantly. While some cats may bond quickly, others might require several months. Always remember not to force interactions if either cat displays signs of stress.

Be prepared for a waiting period as your new cat and resident cat adjust to one another. With patience and adherence to these guidelines, your cats can learn to coexist comfortably (or at least neutrally) – and perhaps even develop a friendship.



CAT REINTRODUCTIONS

When your cats are not getting along and all your efforts at behavior modification have failed, it might be time to consider a reintroduction.

When "reintroducing" two cats that have previously struggled to get along, apply the techniques outlined in the previous section.



With a reintroduction, you'll need to separate the cats and introduce them as if they were meeting for the first time.

The reintroduction process allows each cat to adjust and reduce their stress levels, enabling you to assist them in gradually becoming comfortable with one another once more.